

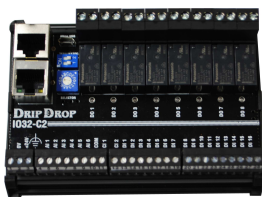
PC-325

Powerful RTU system for control and monitoring of water processes

PC-325



IO32-C2



Application and Function:

- **Pump control and monitoring**
Control of pumps, mixer and flush valve.
- **Alarm detection and signaling**
Overflow, power failure, pump failure.
- **Data collection and calculation**
Start / run time counter, in-/out flow, pump capacity.
- **Logging 31 days and display of curve**
Level, inflow / outflow, overflow, rain, pump capacity.

PC-325 is a powerful control system developed for the clean water and sewage industry which contains the most common functions and function blocks required for this purpose, in compliance with IEC 61131-3 requirements.

A simple and clear menu system with touch display makes the device very user-friendly and easy to navigate.

A good alternative for PLCs, with ready-made functions, it makes easy to configure and run a pump station where many parameters must be set, all information being available to be read on a graphically display, which can be seen both indoors and in bright light outdoors.

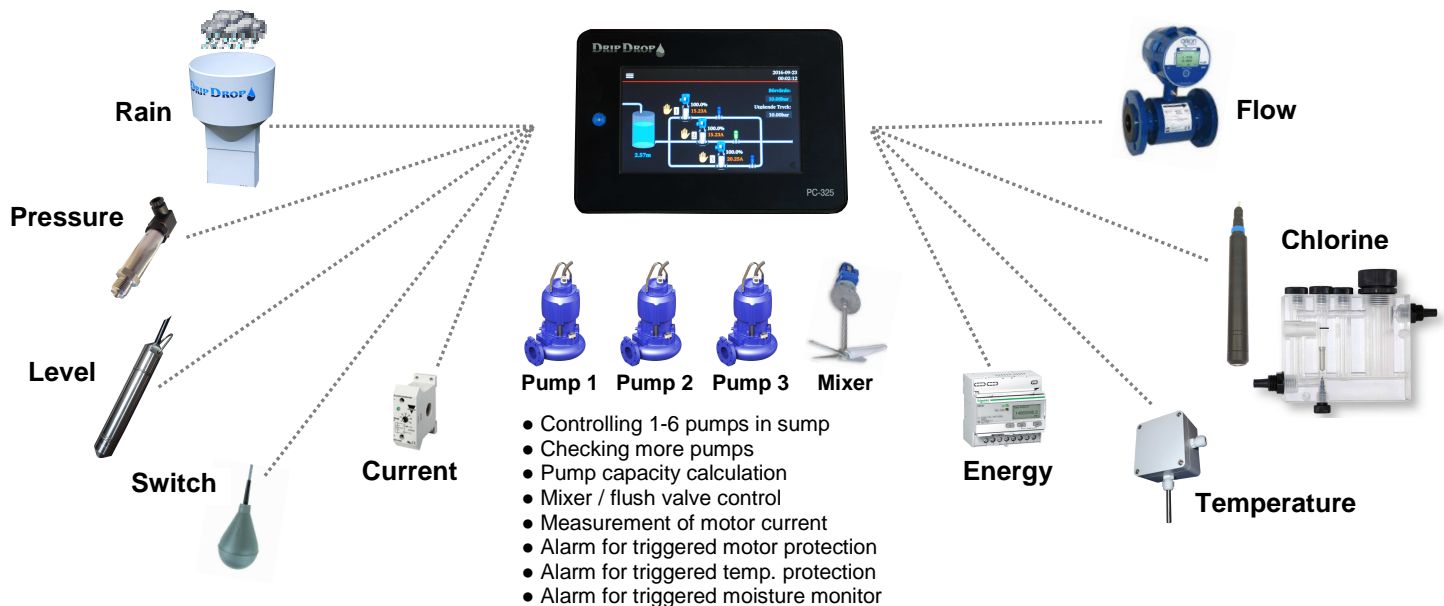
The PC-325 is intended for pumping stations and other water treatment plants where big demands are asked for controlling, alarm handling, logging, data collection and a complete supervision over all sections of the process.

The unit has RS232, RS485, Ethernet, USB interfaces for easy connection to various communication equipments, RADIO, 3G, 4G, GPRS or GSM, in order to connect to various SCADA systems for alarm and data collection. It can also be supplied with internal 3G / 4G modems.

The cross-reference register contained in the device makes it easy to connect PC-325 to the most common SCADA systems that exists on the market.

Communication protocol: COMLI, MODBUS RTU / TCP, MODBUS TCP / IP and CANopen.

Control and monitoring of pump stations with one or more pump groups



ver. 1902

For more information, please contact us!

DRIP DROP 
+46 8 655 02 94 www.dripdrop.se

Features

- Controls, logs and controls 2 pumping groups with up to 6 pumps each.
- The pumps are controlled from analog level sensor and / or level switch.
- Alternator function for pumps.
- Slurping function for cleaning the sump.
- Start and run time counter for the pumps.
- Built-in mixer function for flushing or stirring.
- Alarms for overflow, motor protection, high tilt, temp protection etc.
- Alarm transmission via SMS text with the possibility of SMS acknowledgment.
- Calculation of inflow, outflow, overflow and pump capacity.
- Curve function for displaying trend / history in a graphical display.
- Pulse counters for energy, flow and rain.
- Current inputs for measuring motor currents
- LOG function with 31 day history to read in the display.
- SCADA support for history collection via ring stack or straight stack.
- Cross-reference table that simplifies communication with every existing SCADA system for VA applications.
- Multiple communication interfaces for connecting to a line different types of communication.
- Wifi and Bluetooth for connection to mobile phone or tablet

Technical specification

PC-325

Supply voltage	24VDC (18-32 VDC)
Consumption	3W
Dimensions	166 x 116 x 53 mm (BxHxD)
RS232	1 port 115,2 kb/s
RS485	1 port 115,2 kb/s
CAN-bus	1 port 500 kb/s
Protocol	COMLI, MODBUS RTU, TCP IP, CANopen.

IO32-C2

Supply voltage	24VDC (18-32 VDC)
Consumption	1W
Dimensions	119 x 89 x 64 mm (BxHxD)
Analog Inputs (AI)	6x0/4-20mA (24VDC) 16-bits
Digital Inputs (DI)	16x (max.500V)
Pulse inputs (CI)	2x (max.1kHz)
Digital Outputs (DO)	8x, Relay

I/O-Expansion

Analog inputs(AI)	96x 0/4-20mA / 0-10 V
Analog Output (AO)	32x 4-20mA / 0-10V
Digital Input (DI)	512x
Counter (CI)	16x
Digital Output (DO)	128x

Communication

Ethernet	1 (10/100)
RS232	1
RS485	1
CAN	1
USB	1 (host)

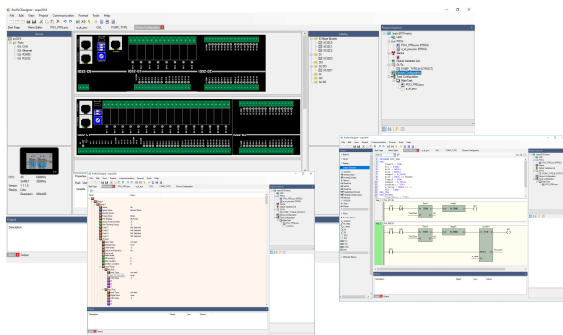
Works with the following SCADA systems:

VA-operator, Uni-View, Citect, iFIX, etc.

Supplementary options

GPRS/3G/4G-module	mini PCIE card 4G
	mini PCIE card 3G
WiFi + Bluetooth	mini PCI Express card
WiFi	mini PCI Express card

Configuration and programming tools - Designer



Communication Interface

