

# PC-327

## Powerful RTU system for control and monitoring of pump stations

PC-327



IO32-C2



### Application and Function:

- **Pump control and monitoring**  
Control of pumps, mixer and flush valve.
- **Water chlorination and monitoring**  
Chlorinate water using sodium hypochlorite or chlorine gas.
- **Alarm detection and signaling**  
Overflow, power failure, pump failure.
- **Data collection and calculation**  
Start / run time counter, input / output flow, pump capacity.
- **Logging 31 days and display of curve**  
Level, inflow / outflow, overflow, pump capacity, rain.

PC-327 is a powerful control system developed for the clean water and sewage industry which contains the most common functions and function blocks required for this purpose, in compliance with IEC 61131-3 regulations.

A simple and clear menu system with touch display makes the device very user-friendly and easy to navigate.

A good alternative for PLCs, with ready-made functions, it makes easy to configure and run a pump station where many parameters must be set, all information being available to be read on a graphically display, which can be seen both indoors and in bright light outdoors.

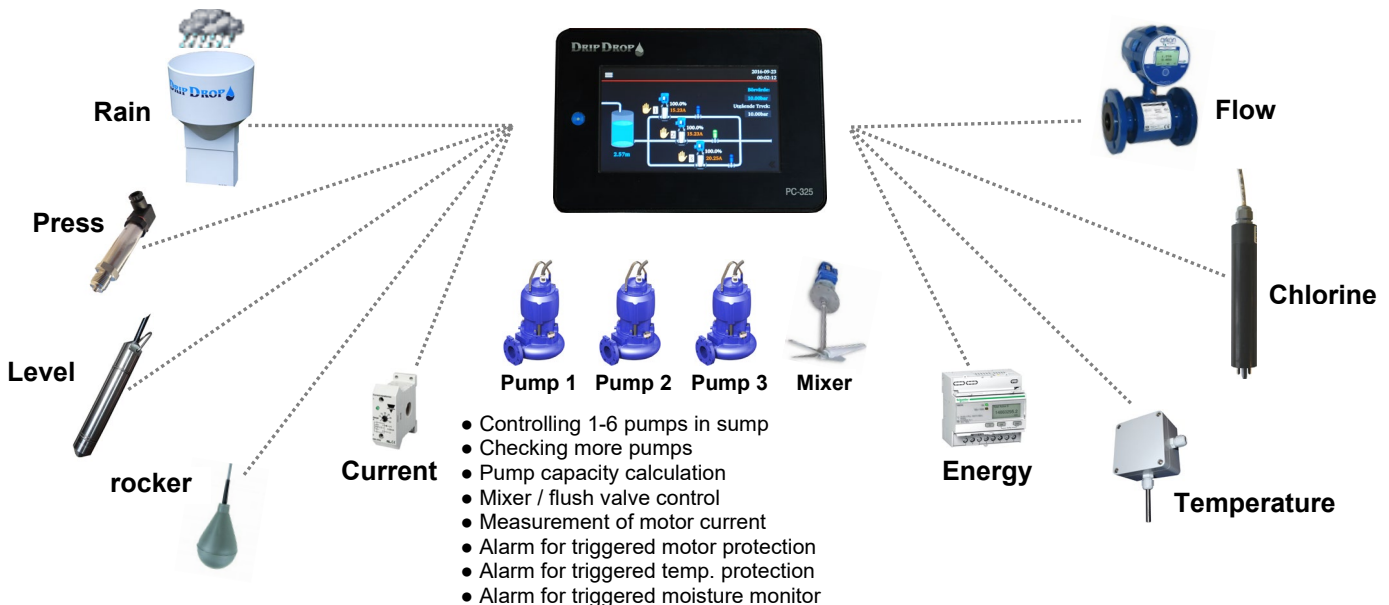
The PC-327 is intended for pumping stations and other water treatment plants where big demands are asked for controlling, alarm handling, logging, data collection and a complete supervision over all sections of the process.

The unit has RS485, Ethernet, USB interfaces for easy connection to various communication equipments, RADIO, 3G, 4G, GPRS or GSM, in order to connect to various SCADA systems for alarm and data collection. It can also be supplied with internal 3G / 4G modems.

**The cross-reference register** contained in the device makes it easy to connect PC-327 to the most common SCADA systems on the market.

Communication protocol: COMLI, MODBUS RTU / TCP, MODBUS TCP / IP, CANopen and OPCUA.

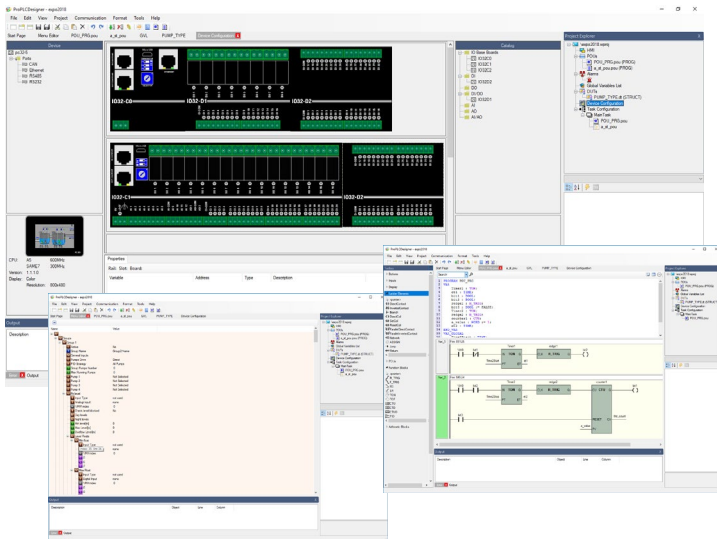
## Control and monitoring of pump stations with one or more pump groups



**Features**

- Controls, logs and controls 2 pumping groups with up to 6 pumps each.
- The pumps are controlled from analog level sensor and / or level switch.
- Alternator function for pumps.
- Slurping function for cleaning the sump.
- Start and run time counter for the pumps.
- Built-in mixer function for flushing or stirring.
- Alarms for overflow, motor protection, high tilt, temp protection etc.
- Alarm transmission via SMS text with the possibility of SMS acknowledgment.
- Calculation of inflow, outflow, overflow and pump capacity.
- Curve function for displaying trend / history in a graphical display.
- Pulse counters for energy, flow and rain.
- Current inputs for measuring motor currents
- Log function with 31 day history to read in the display.
- SCADA support for history collection via ring stack or straight stack.
- Cross-reference table that simplifies communication with everyone existing SCADA system for VA applications.
- Multiple communication interfaces for connecting to a line different types of communication.
- Wifi and Bluetooth for connection to mobile phone or tablet

**Configuration and programming tools - Designer**



**Technical specification**

**PC327**

Supply voltage	24VDC (18-32 VDC)
Consumption	3W
Dimensions	166 x 116 x 53mm (BxHxD)
RS-232	1 port up to 115,2 kb/s
RS-485	1 port up to 115,2 kb/s
CAN-bus Protocol	1 port up to 500 kb/s
	COMLI / MODBUS RTU / TCP/IP / CANopen/OPCUa.

**IO32-C1**

Supply voltage	24VDC (18-32 VDC)
Consumption	1W
Dimensions	200 x 89 x 64mm (BxHxD)
Analog Inputs (AI)	12x 0/4-20mA (24VDC)
Analog Outputs (AO)	2x 0/4-20mA(24VDC) or 0-10V
Digital Inputs (DI)	24x
Pulse inputs (CI)	4x
Digital Outputs (DO)	16x, Relay

**Extended IO via supplementary modules**

Analog inputs(AI)	96x 0/4-20mA
Analog Output (AO)	32x 4-20mA / 0-10V
Digital Input (DI)	512x
Counter (CI)	16x
Digital Outputs (DO)	128x

**Works with the following SCADA systems:**  
VA-operatör, Uni-View, Citect, iFIX, etc.

**Communication**

Ethernet	1x 10/100
RS 232	1x
RS 485	1x
CAN	1x
USB	1 host

Supplementary options  
GPRS/3G/4G-module

- mini PCIE card 4G
- mini PCIE card 3G

- Wifi + Bluetooth mini PCI Express card
- Wifi mini PCI Express card

**Communication Interface**

